

100-130V

50 a.60Hz

3pol. 4pol. 5pol.
4h 4h 4h

200-250V

50 a.60Hz

3pol. 4pol. 5pol.
6h 9h 9h

345-415V

50 a.60Hz

3pol. 4pol. 5pol.
9h 6h 6h

480-500V

50 a.60Hz

3pol. 4pol. 5pol.
7h 7h 7h

>50-500V

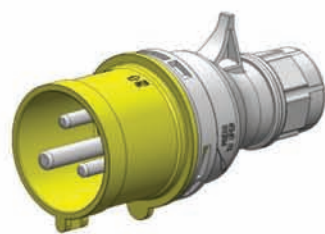
100-300Hz

3pol. 4pol. 5pol.
10h 10h 10h

>50-500V

300-500Hz

3pol. 4pol. 5pol.
2h 2h 2h



IP44



2P+

C013-4

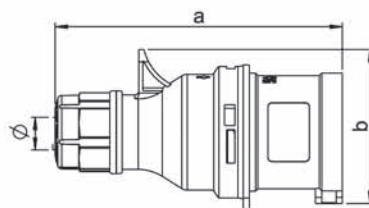
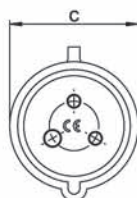
C023-4

電壓

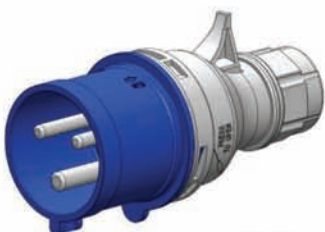
Voltage(V):100-130V~

防護等級

Protection degree: IP44



Type	C013-4	C023-4
Rated current(A)	16	32
Dimension(mm)	a	112
	b	55
	c	49.5
	φ	8-14
Cable nominal cross-section area(mm ²)	1-2.5	2.5-6



IP44



2P+

C013

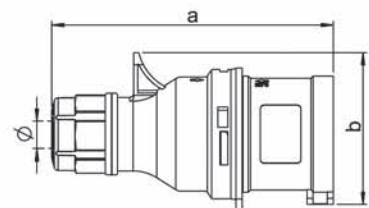
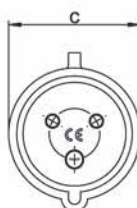
C023

電壓

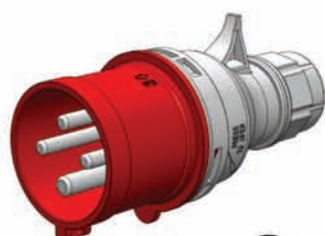
Voltage(V):200-250V~

防護等級

Protection degree: IP44



Type	C013	C023
Rated current(A)	16	32
Dimension(mm)	a	112
	b	55
	c	49.5
	φ	8-14
Cable nominal cross-section area(mm ²)	1-2.5	2.5-6



IP44



3P+

C014

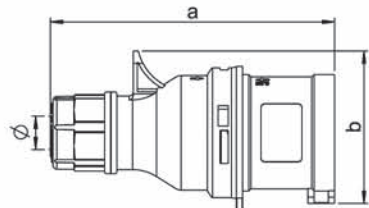
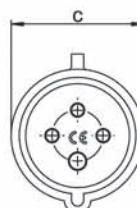
C024

電壓

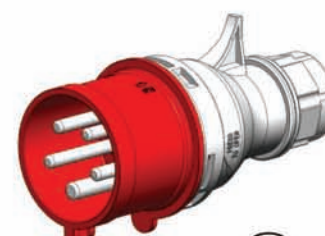
Voltage(V):380-415V~

防護等級

Protection degree: IP44



Type	C014	C024
Rated current(A)	16	32
Dimension(mm)	a	116
	b	63
	c	56
	φ	8-14
Cable nominal cross-section area(mm ²)	1-2.5	2.5-6



IP44



3P+N+

C015

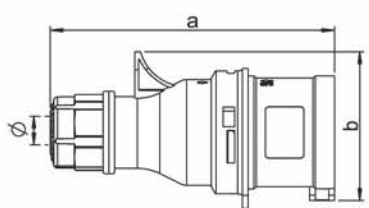
C025

電壓

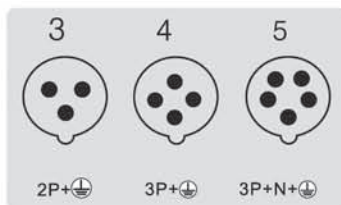
Voltage(V): 200-346V~
240-415V~

防護等級

Protection degree: IP44



Type	C015	C025
Rated current(A)	16	32
Dimension(mm)	a	125.5
	b	71
	c	63.5
	φ	10-19.5
Cable nominal cross-section area(mm ²)	1-2.5	2.5-6



100-130V

50 a.60Hz

3pol. 4pol. 5pol.
4h 4h 4h

200-250V

50 a.60Hz

3pol. 4pol. 5pol.
6h 9h 9h

346-415V

50 a.60Hz

3pol. 4pol. 5pol.
9h 6h 6h

480-500V

50 a.60Hz

3pol. 4pol. 5pol.
7h 7h 7h

>50-500V

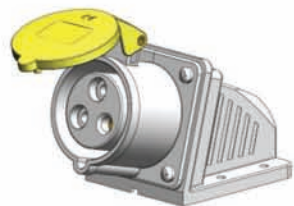
100-300Hz

3pol. 4pol. 5pol.
10h 10h 10h

>50-500V

300-500Hz

3pol. 4pol. 5pol.
2h 2h 2h

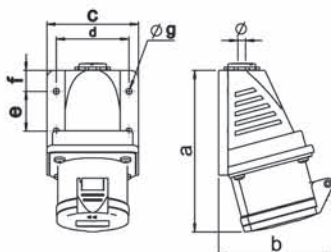


IP44

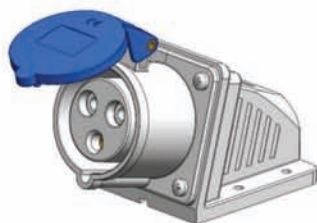


C113-4
C123-4

電壓 Voltage(V):100-130V~
防護等級 Protection degree: IP44



Type	C113-4	C123-4
Rated current(A)	16	32
Dimension(mm)	a	119.5
	b	83.5
	c	74
	d	58
	e	34
	f	10
	g	5.5
	Ø	8-14
	10-19.5	
Cable nominal cross-section area(mm²)	1-2.5	2.5-6

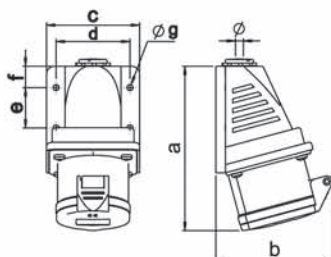


IP44

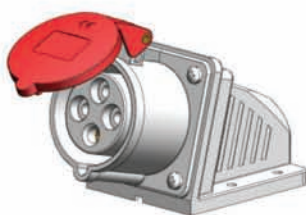


C113
C123

電壓 Voltage(V):200-250V~
防護等級 Protection degree: IP44



Type	C113	C123
Rated current(A)	16	32
Dimension(mm)	a	119.5
	b	83.5
	c	74
	d	58
	e	34
	f	10
	g	5.5
	Ø	8-14
	10-19.5	
Cable nominal cross-section area(mm²)	1-2.5	2.5-6

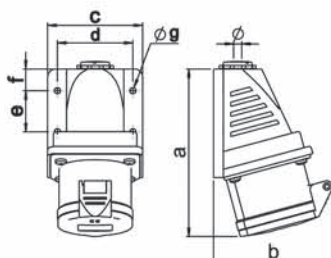


IP44

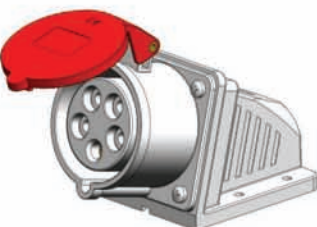


C114
C124

電壓 Voltage(V):380-415V~
防護等級 Protection degree: IP44



Type	C114	C124
Rated current(A)	16	32
Dimension(mm)	a	120.5
	b	87.5
	c	74
	d	58
	e	34
	f	10
	g	5.5
	Ø	8-14
	10-19.5	
Cable nominal cross-section area(mm²)	1-2.5	2.5-6

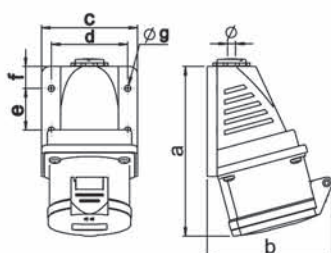


IP44

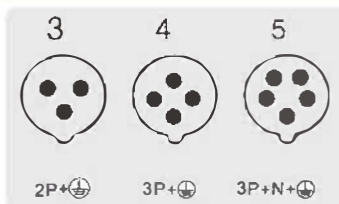


C115
C125

電壓 Voltage(V): 200-346V~
240-415V~
防護等級 Protection degree: IP44



Type	C115	C125
Rated current(A)	16	32
Dimension(mm)	a	121
	b	99
	c	74
	d	58
	e	34
	f	10
	g	5.5
	Ø	10-19.5
	14-21.5	
Cable nominal cross-section area(mm²)	1-2.5	2.5-6


100-130V

50 a.60Hz

 3pol. 4pol. 5pol.
4h 4h 4h

200-250V

50 a.60Hz

 3pol. 4pol. 5pol.
6h 9h 9h

346-415V

50 a.60Hz

 3pol. 4pol. 5pol.
9h 6h 6h

480-500V

50 a.60Hz

 3pol. 4pol. 5pol.
7h 7h 7h

>50-500V

100-300Hz

 3pol. 4pol. 5pol.
10h 10h 10h

>50-500V

300-500Hz

 3pol. 4pol. 5pol.
2h 2h 2h


IP44

2P+

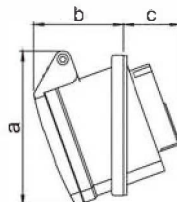
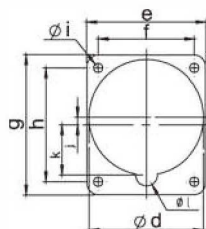
C413-4
C423-4

電壓

Voltage(V):100-130V~

防護等級

Protection degree: IP44



Type	C413-4	C423-4
Rated current(A)	16	32
Dimension(mm)	a	72
	b	43
	c	29
	d	53
	e	62
	f	48.5
	g	68
	h	54.5
	i	7
	j	3
	k	22
	l	13
Cable nominal cross-section area(mm²)	1-2.5	2.5-6



IP44

2P+

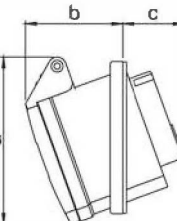
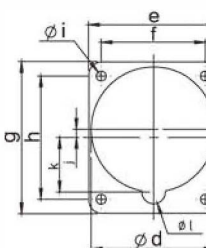
C413
C423

電壓

Voltage(V):200-250V~

防護等級

Protection degree: IP44



Type	C413	C423
Rated current(A)	16	32
Dimension(mm)	a	72
	b	43
	c	29
	d	64
	e	62
	f	62.5
	g	68
	h	76.5
	i	7
	j	3
	k	22
	l	13
Cable nominal cross-section area(mm²)	1-2.5	2.5-6



IP44

3P+

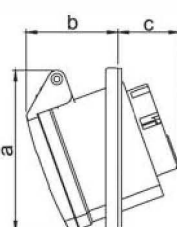
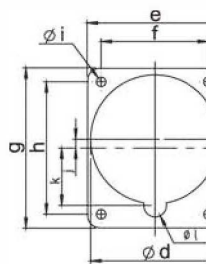
C414
C424

電壓

Voltage(V):380-415V~

防護等級

Protection degree: IP44



Type	C414	C424
Rated current(A)	16	32
Dimension(mm)	a	75.5
	b	41.5
	c	33
	d	71
	e	72
	f	62.5
	g	84
	h	76.5
	i	7
	j	4.5
	k	30
	l	13
Cable nominal cross-section area(mm²)	1-2.5	2.5-6



IP44

3P+N+

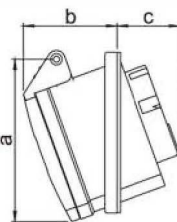
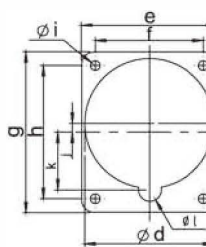
C415
C425

電壓

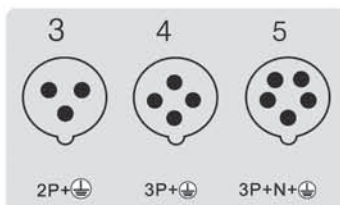
 Voltage(V): 200-346V~
240-415V~

防護等級

Protection degree: IP44



Type	C415	C425
Rated current(A)	16	32
Dimension(mm)	a	75.5
	b	41.5
	c	33
	d	69
	e	72
	f	58
	g	84
	h	68
	i	7
	j	4.5
	k	30
	l	13
Cable nominal cross-section area(mm²)	1-2.5	2.5-6



100-130V

50 a.60Hz

3pol. 4pol. 5pol.
4h 4h 4h

200-250V

50 a.60Hz

3pol. 4pol. 5pol.
6h 9h 9h

346-415V

50 a.60Hz

3pol. 4pol. 5pol.
9h 6h 6h

480-500V

50 a.60Hz

3pol. 4pol. 5pol.
7h 7h 7h

>50-500V

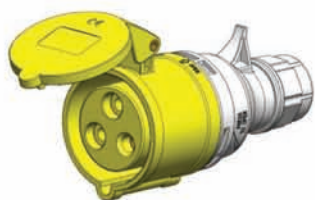
100-300Hz

3pol. 4pol. 5pol.
10h 10h 10h

>50-500V

300-500Hz

3pol. 4pol. 5pol.
2h 2h 2h



IP44



C213-4

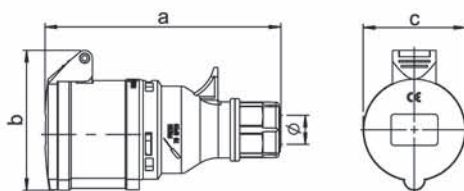
電壓

Voltage(V):100-130V~

C223-4

防護等級

Protection degree: IP44



Type	C213-4	C223-4
Rated current(A)	16	32
Dimension(mm)	a	121
	b	69.5
	c	50
	φ	8-14
Cable nominal cross-section area(mm ²)	1-2.5	2.5-6



IP44



C213

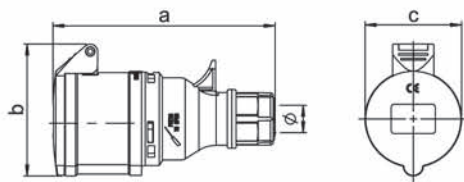
電壓

Voltage(V):200-250V~

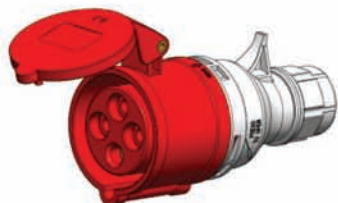
C223

防護等級

Protection degree: IP44



Type	C213	C223
Rated current(A)	16	32
Dimension(mm)	a	121
	b	69.5
	c	50
	φ	8-14
Cable nominal cross-section area(mm ²)	1-2.5	2.5-6



IP44



C214

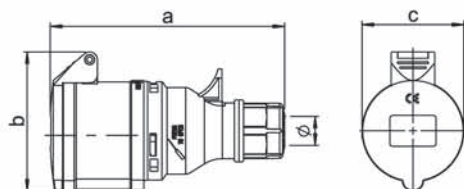
電壓

Voltage(V):380-415V~

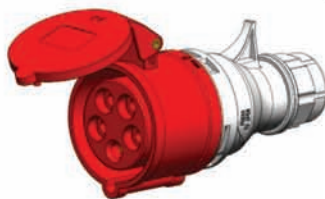
C224

防護等級

Protection degree: IP44



Type	C214	C224
Rated current(A)	16	32
Dimension(mm)	a	125.5
	b	78
	c	56.5
	φ	8-14
Cable nominal cross-section area(mm ²)	1-2.5	2.5-6



IP44



C215

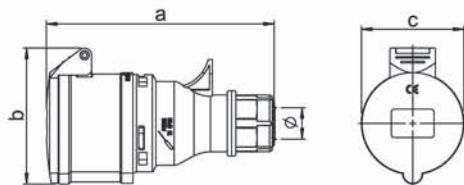
電壓

Voltage(V): 200-346V~
240-415V~

C225

防護等級

Protection degree: IP44



Type	C215	C225
Rated current(A)	16	32
Dimension(mm)	a	132
	b	87
	c	64
	φ	10-19.5
Cable nominal cross-section area(mm ²)	1-2.5	2.5-6